



DOMINOFIX INSTRUCTIONS

For both 8MM and 10MM



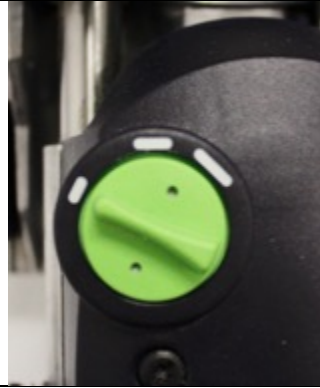
SEE VIDEO

**IMPORTANT: Make sure your Festool Domino DF 500 is calibrated before using.
See Festool Domino DF 500 Instructions**

1 - Drilling male connector

- Depth: 12mm

- Width: Narrow setting



2 - Drilling male connector

ACCURACY REQUIRED, NO TOLERANCE



3 - Drilling female connector

- Depth: 28mm

- Width: Widest setting



4 - Drilling female connector

ACCURACY REQUIRED, NO TOLERANCE



5 - Drilling tightening holes WITH drill jig

Use the dowels delivered with the jig.

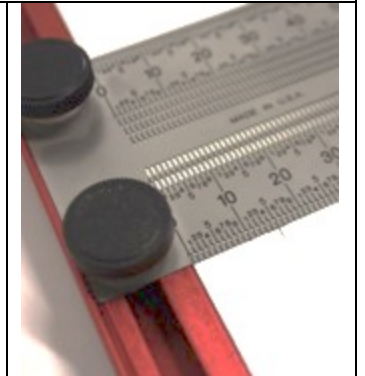
Set correct depth of drill sleeve.



6 - Drilling tightening holes WITHOUT drill jig

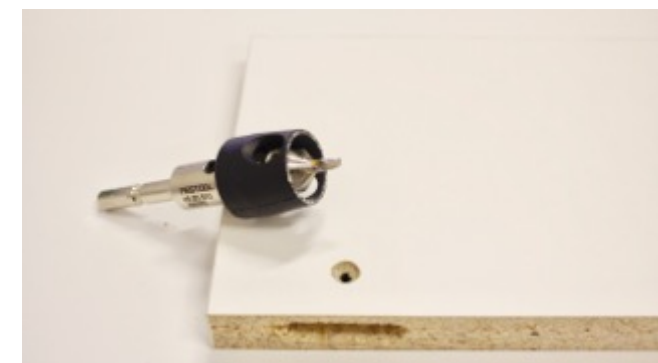
Use the marking hole on Festool Domino DF 500

Measure 15mm from edge.



7 - Drilling tightening holes

Countersink holes – We recommend using countersink with adjustable depth setting.



8 - Drilling tightening holes

Clean out holes before inserting connectors.



9 – Insert female connectors
Push connectors to bottom. Use a male connector or wooden dowel to make inserting easier



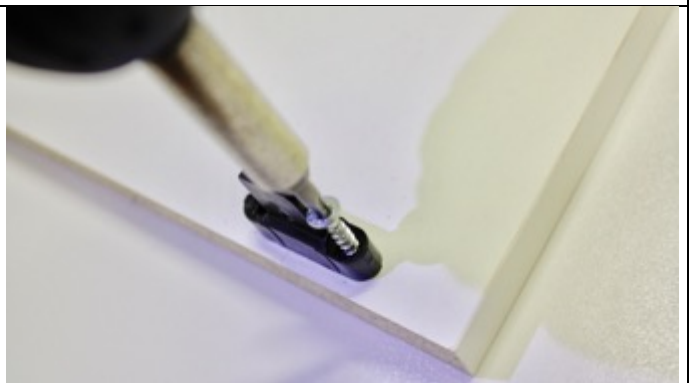
10 – Insert female connectors
Use **LOW TORQUE** and delivered Spax screws to assemble connectors. **Check if depth is correct.**



11 – Insert male connectors



12 – Insert male connectors
Use **LOW TORQUE** and delivered Spax screws to assemble male connectors.



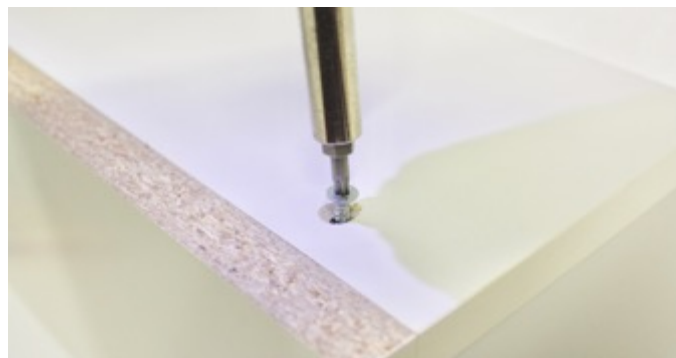
13 – Slotting joint
Slot the joints together, make sure your parts are aligned.



14 – Connecting joint
Close your joint.



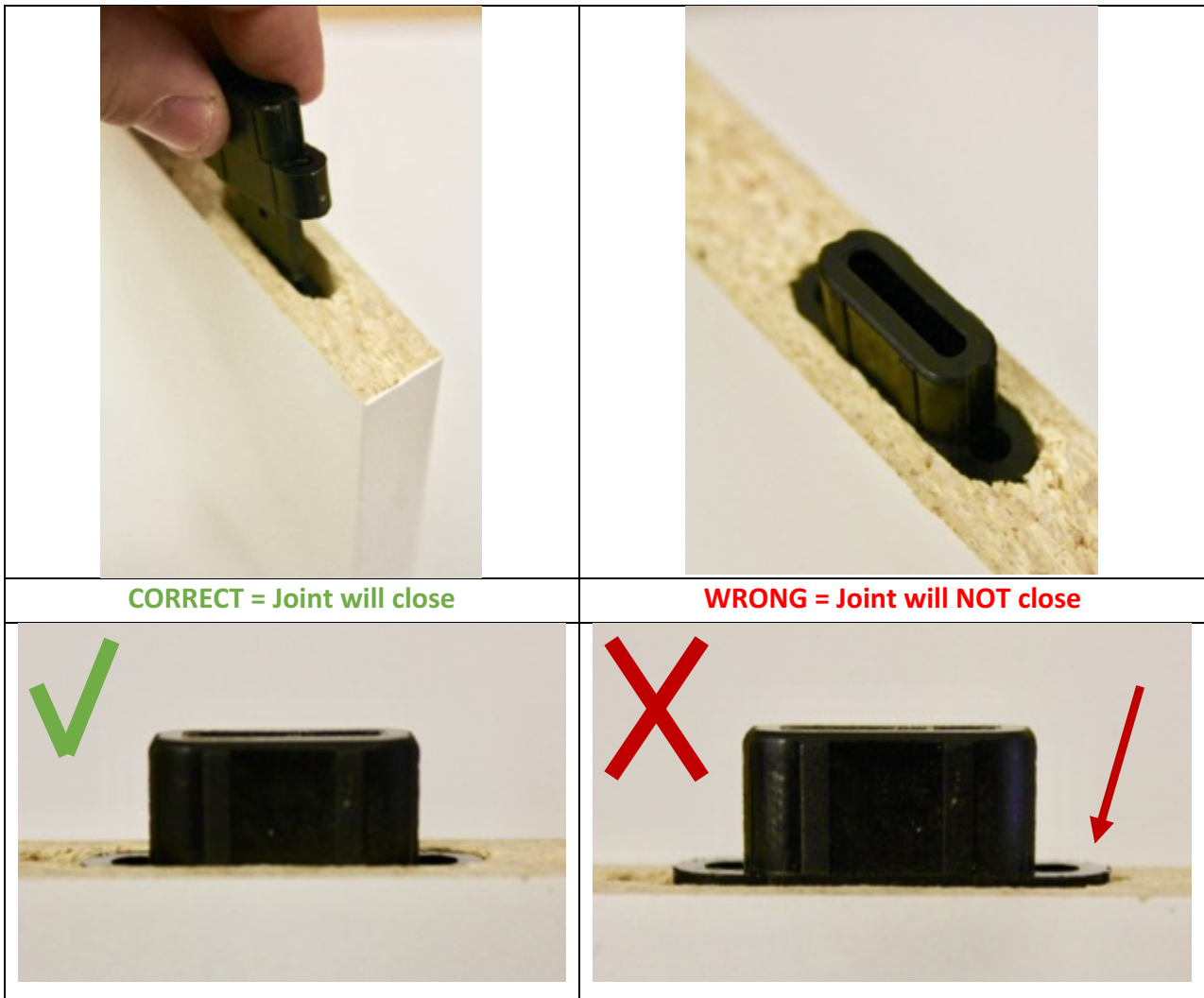
15 – Connecting joint
Use delivered Plastofast screws to connect and tighten joint.



16 – Connecting joint
Optional use with self-adhesive cover caps.



Depth of female connector



Make sure your female connectors are deep enough to avoid any open joint.

You can test this by inserting a male connector in the female connector before closing your joint.

If the wide part of the male connector is above your mortise, the joint will NOT close and will move.

You can control the depth of the female connectors with the screws and higher torque if needed. The use of torque is material depending.

Dominofix Domino Dowels-Tenons for easy and fast assembly.
Made for Festool Domino DF-500 or alternative routed slots.

Dominofix 8MM

Area of application:

- Cabinets
- Framework
- Furniture
- Flat-packed furniture for self assembly
- In combination with wooden dowels and glue

Minimum thickness material:

- 16mm for Melamine, MDF, Plywood, OSB and other similar sheet material.
- 20mm for solid wood, including solid wood sheets such as glued panels.

Dominofix 10MM

Area of application:

- Table tops up to 30mm
- Framework
- Furniture
- Flat-packed furniture for self assembly

Minimum - maximum thickness material:

- 22mm to 30mm

Notice: Maximum distance between dowels/tenons is 130MM for best performance.
Use e.g. multiple Dominofix OR combination of Dominofix and wooden dowels/tenons.

The user is liable for damage and injury resulting from incorrect usage.

Dominofix is intended to be used by professionals only.

The quality and thickness of the material has an impact on the strength of the joint with Dominofix

If needed and allowed by the size of the material, longer screws can/should be used according to the joint. We recommend using 3,5mm thick Spax screws.

Dominofix is a connector and not a load bearing structural element.

For any questions please contact us:

Dominofix Connectors .LTD

info@dominofix.com

www.dominofix.com

Hallitie 16 V5

96320 Rovaniemi

Finland